

Test Case-05

Test Name: RJIL-IP-QA-DS-SYS-005

Test Objective: To check support of IEEE 802.1p priority queuing and remarking

Test Configuration:

policy- map priority

classify VLAN 100

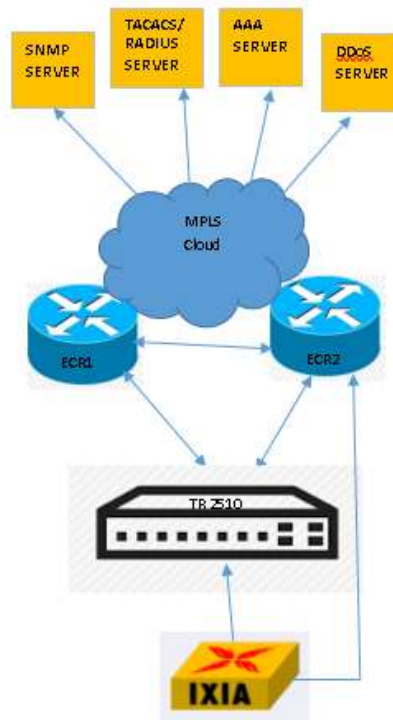
action cos 7

interface GigaEthernet0/6

switchport mode trunk

qos policy priority ingress

Test Set up (Including Pre requisites): Switch , IXIA, ECR1, ECR2



Procedure: Connect switch to IXIA

Action:		Response:	
1	Generate the traffic from IXIA towards switch show run interface GigaEthernet0/6	1	Switch will prioritize the traffic based on qos policy apply on interface

Expected Result: Switch will prioritize the traffic based on qos policy apply on interface

Actual Result:

BGLRRLABECR001#sh policy-map interface gi 0/0/11 input | b VLAN-333

Class-map: VLAN-333 (match-any)

126195 packets, 189292500 bytes

30 second offered rate 8977000 bps, drop rate 4024000 bps

Match: vlan 333

police:

cir 5000000 bps, bc 156250 bytes

conformed 68514 packets, 102771000 bytes; actions:

transmit

exceeded 8137 packets, 12205500 bytes; actions:

drop

conformed 4983000 bps, exceeded 12000 bps

Service-policy : VLAN-333

Class-map: QOS-PLATINUM-COS (match-any)

105090 packets, 157635000 bytes

30 second offered rate 8956000 bps, drop rate 4011000 bps

Match: cos 6 7

police:

cir 5000000 bps, bc 156250 bytes

conformed 58324 packets, 87486000 bytes; actions:

set-qos-transmit 6

set-mps-exp-imposition-transmit 6

exceeded 46603 packets, 69904500 bytes; actions:

drop

conformed 4967000 bps, exceeded 4011000 bps

Class-map: class-default (match-any)

0 packets, 0 bytes

30 second offered rate 0000 bps, drop rate 0000 bps

Match: any

Switch#show running-config interface gigaEthernet 0/3

Building configuration...

Current configuration:

!

interface GigaEthernet0/3

switchport trunk vlan-allowed 333,335

switchport mode trunk

qos policy QOS-333 ingress

Switch#show policy-map

policy-map QOS-333

classify vlan 333

action cos 7

Switch#show policy-map interface gigaEthernet 0/3

Policy on port g0/3:

QOS-333 Ingress

Classify:

vlan 333

Action:

cos 7

Switch#

without p-bit marking at EDS

BGLRRLABECR001#sh policy-map interface gi 0/0/11 input | b VLAN-333

Class-map: VLAN-333 (match-any)

373725 packets, 560587500 bytes

30 second offered rate 9000000 bps, drop rate 3999000 bps

Match: vlan 333

police:

 cir 5000000 bps, bc 156250 bytes

conformed 206151 packets, 309226500 bytes; actions:

 transmit

exceeded 64610 packets, 96915000 bytes; actions:

 drop

conformed 5062000 bps, exceeded 3995000 bps

Service-policy : VLAN-333

Class-map: QOS-PLATINUM-COS (match-any)

267874 packets, 401811000 bytes

30 second offered rate 3008000 bps, drop rate 6000 bps

Match: cos 6 7

police:

 cir 5000000 bps, bc 156250 bytes

conformed 167727 packets, 251590500 bytes; actions:

 set-qos-transmit 6

 set-mpls-exp-imposition-transmit 6

exceeded 100142 packets, 150213000 bytes; actions:

 drop

conformed 3040000 bps, exceeded 6000 bps

Class-map: class-default (match-any)

84746 packets, 127119000 bytes

30 second offered rate 5992000 bps, drop rate 0000 bps

Match: any

BGLRRLABECCR001#sh policy-map int gi 0/0/11 | b VLAN-333

Class-map: VLAN-333 (match-any)

922849 packets, 1384273500 bytes

30 second offered rate 4095000 bps, drop rate 0000 bps

Match: vlan 333

police:

cir 5000000 bps, bc 156250 bytes

conformed 577343 packets, 866014500 bytes; actions:

transmit

exceeded 242518 packets, 363777000 bytes; actions:

drop

conformed 4089000 bps, exceeded 0000 bps

Service-policy: VLAN-333

Class-map: QOS-PLATINUM-COS (match-any)

506279 packets, 759418500 bytes

30 second offered rate 2886000 bps, drop rate 0000 bps

Match: cos 6 7

police:

cir 3000000 bps, bc 93750 bytes

conformed 39403 packets, 59104500 bytes; actions:

set-qos-transmit 6

set-mpls-exp-imposition-transmit 6

exceeded 0 packets, 0 bytes; actions:

drop

conformed 2878000 bps, exceeded 0000 bps

Class-map: QOS-BRONZE-COS (match-any)

125 packets, 187500 bytes

30 second offered rate 12000 bps, drop rate 0000 bps

Match: cos 0 1

QoS Set

mpls experimental imposition 1

Marker statistics: Disabled

qos-group 1

Marker statistics: Disabled

Class-map: class-default (match-any)

395340 packets, 593010000 bytes

30 second offered rate 1195000 bps, drop rate 0000 bps

Match: any

Class-map: class-default (match-any)

769225 packets, 1152283133 bytes

30 second offered rate 2999000 bps, drop rate 0000 bps

Match: any

Switch#sh run int gi 0/3

Building configuration...

Current configuration:

!

interface GigaEthernet0/3

switchport trunk vlan-allowed 333,335

switchport mode trunk

qos policy QOS-333 ingress

Switch#sh policy-map

policy-map QOS-333

classify vlan 333

action cir 64 bc 30 pir 64 be 30 conform forward exceed discardable yellow violate drop tcm-end

Switch#